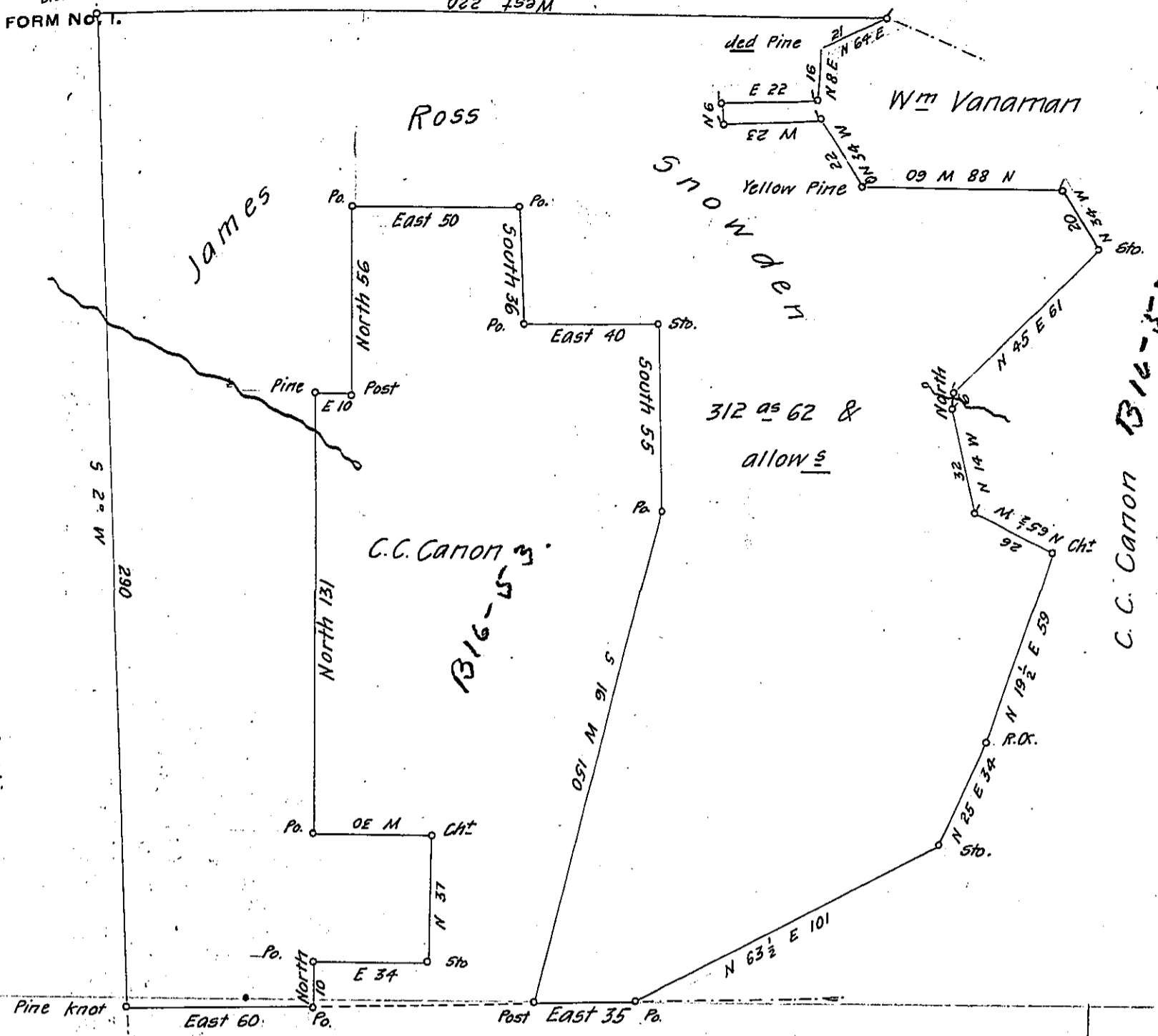


store FORM NO. 1.

Old Surveys of Samuel Wallis



Land Surveyed to D. K. Jackman

Situated in Leidy Township Clinton County Containing Three
 Hundred twelve acres & Sixty two Perches & Allowance Surveyed
 Thomas B. Quay in trust
 January 2nd 1866 for James Ross Snowden in pursuance of his Warrant
 dated November 21st 1865

By

J. L. Eckel

County Surveyor of Clinton Co.

To James P. Barr Esq.

Surveyor General

IN TESTIMONY that the above is a copy of the original remaining on file in
 the Department of Internal Affairs of Pennsylvania, made
 conformably to an Act of Assembly approved the 16th day of
 February, 1833, I have hereunto set my Hand and caused
 the Seal of said Department to be affixed at Harrisburg,
 this twenty third day of May 1906

Loac & Brown
 Secretary of Internal Affairs.